

INSTALLATION MANUAL

Single-lever lavatory faucet

Item no.: KAL01**

※COMPONENTS CHECKING

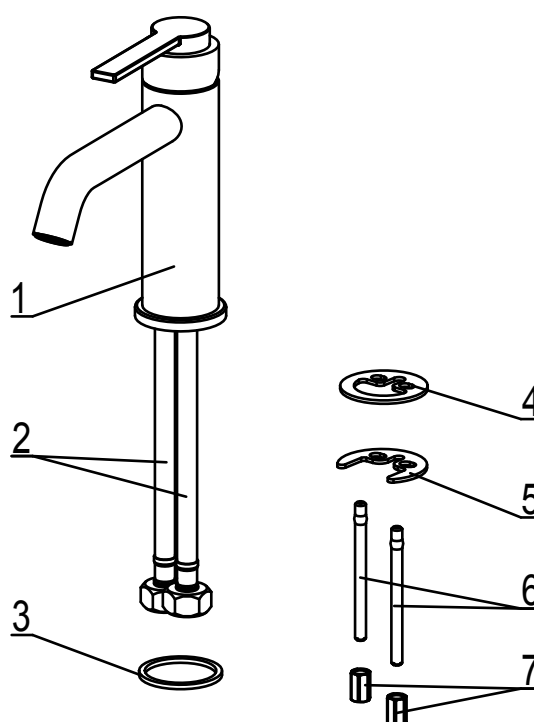
LIST OF THE STANDARD COMPONENTS:

Please double-check the component list hereinafter and contact our company or our distributor for any unconformity.

Remarks: 1. Without affecting their performing, components may be changed without further notice.

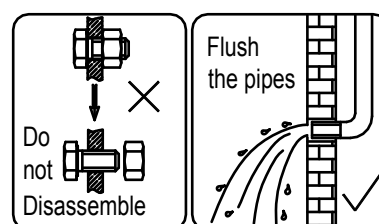
2. Drawings for reference only. Product size & shape refer to actual faucet.

The Component List	Qty.
1. Main body	1
2. Inlet hose	1
3. Washer	1
4. 2-hole washer	1
5. 2-hole gasket	1
6. Long rod	2
7. Nut	2

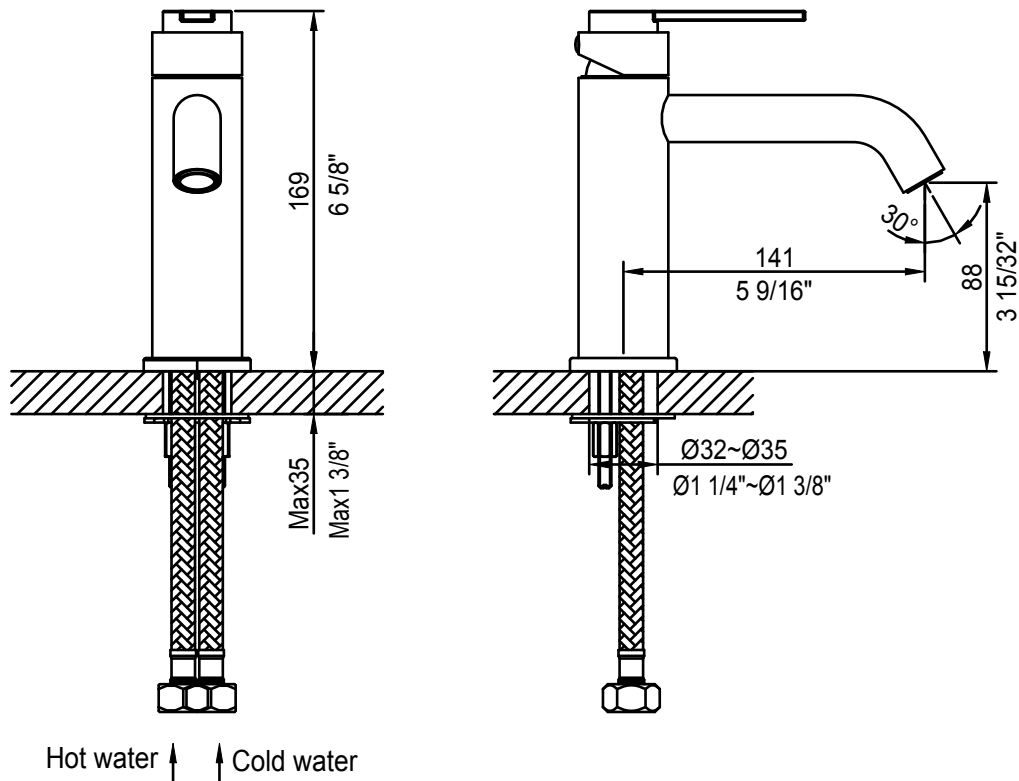


※ Installation Instructions

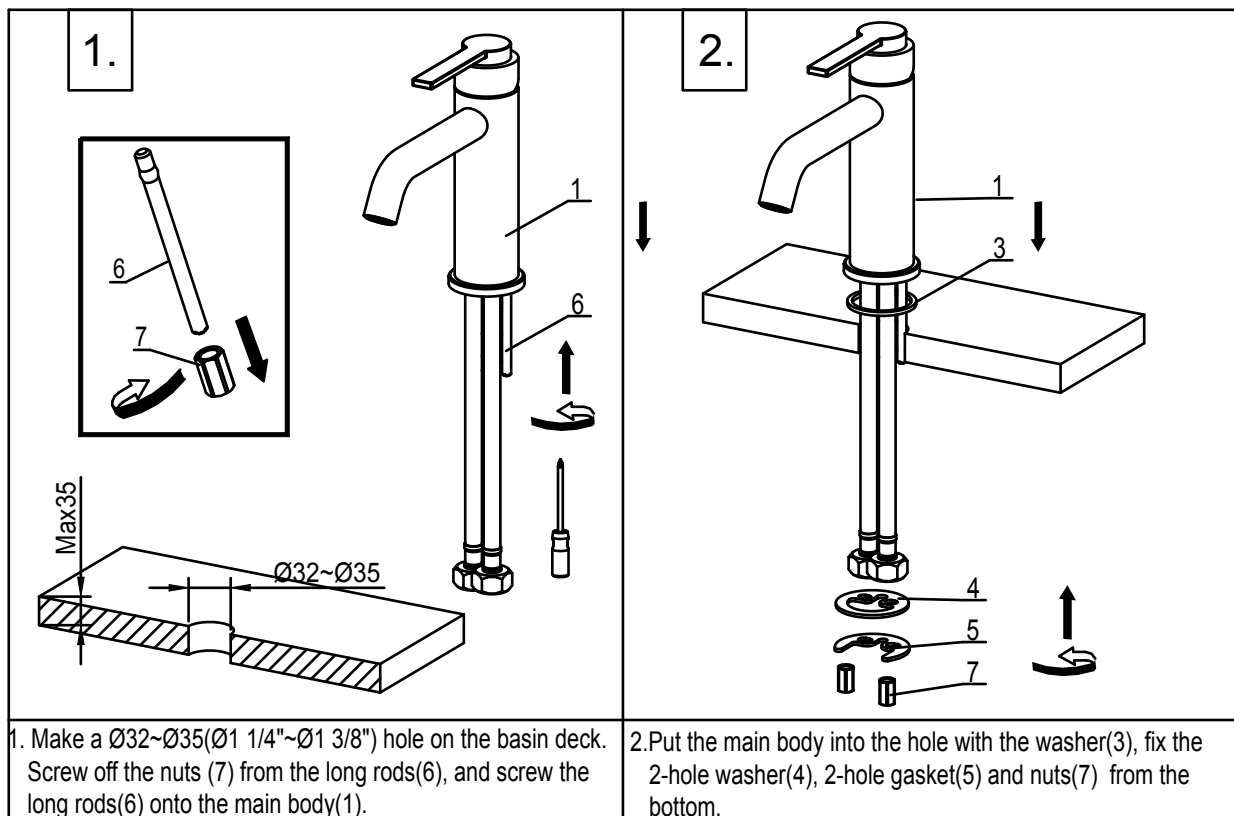
- ☆ Do not disassemble the control main body, as it has been installed & commissioned correctly & precisely before delivery from the factory.
- ☆ To avoid the faucet from jamming, do flush the water pipe before installation.
- ☆ After installation, make sure every joint is safely sealed and that there is no leaking.
- ☆ Using condition: Working pressure at 0.05Mpa-1.0MPa (including cold & hot water pressure) with applicable water temperature: 4℃-90℃.
- ☆ Make sure to connect the hot/cold inlet pipe correctly: if standing in front, hot water pipe connecting to the left & cold water pipe connecting to the right.

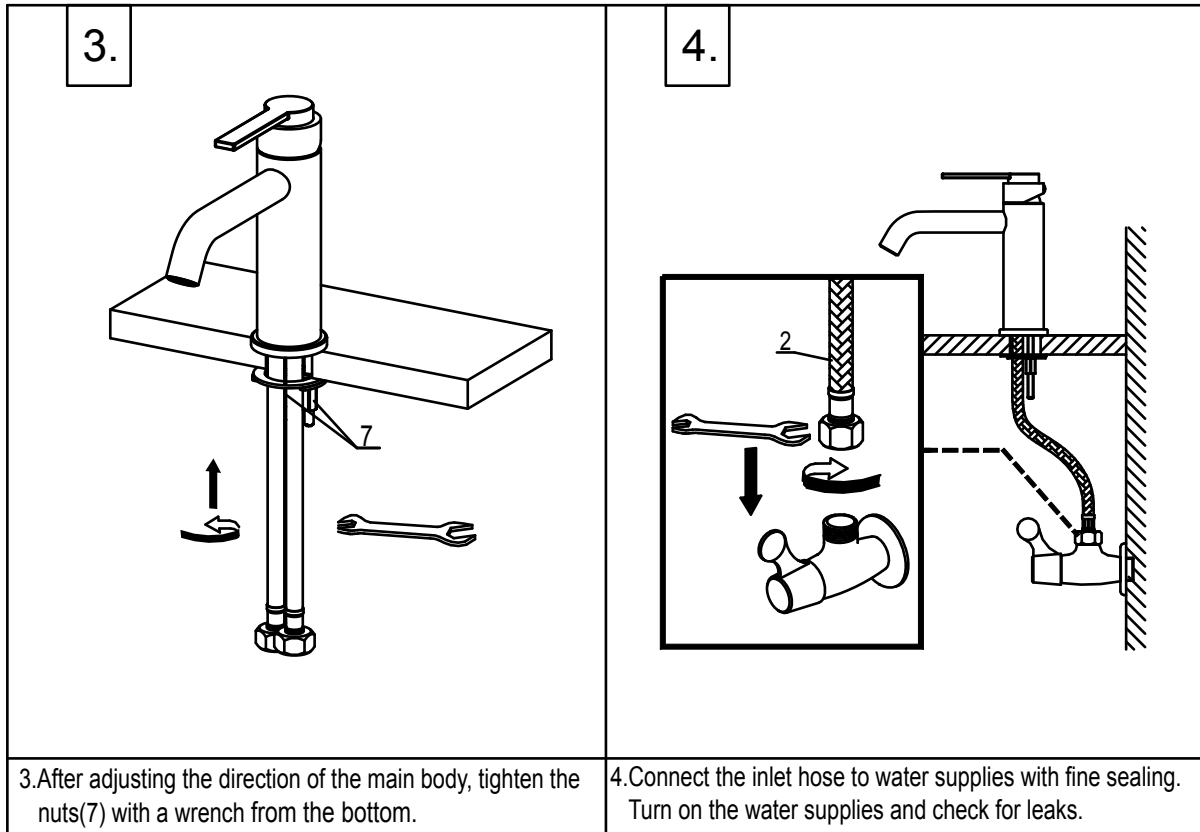


※ Dimension drawing



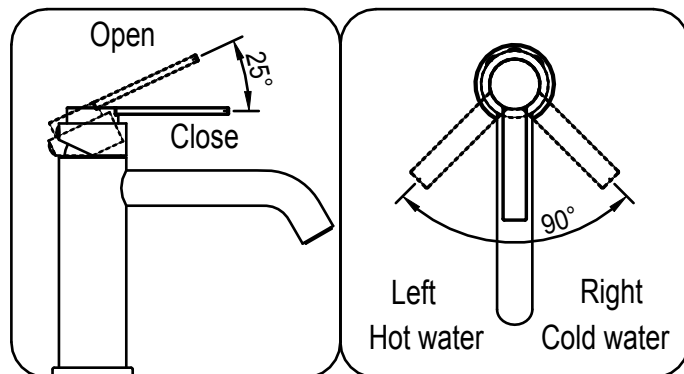
※ Installation Procedures





※ Usage

- 1) Raise the handle lever up for opening water, push down to close.
- 2) Turn the handle lever to the left to increase hot water flow, to the right to lower water temperature.



※ Cleaning & Maintenance

- ☆ To keep the product clean & shining, follow the steps as below:
1. Flush with clean water & dry with soft cloth only.
 2. If any dirt, clean with soft liquid or transparent glass detergent.
 3. Do not use any scrubbing detergent, polisher, sand-cloth, paper tissue or scraper.
 4. Do not use acid detergent, indissolvable grain-like detergent or soap.
 5. Circumrotate the aerator off and clean it when necessary.



※ This installation instruction is only for your reference, the final right to explain & to revise it belongs to us.